

# The Philadelphia Engineer

Founding Chapter 1934 – May 2025 issue

## 2024-25 Chapter Program

The Pennsylvania Society  
of Professional Engineers  
Philadelphia Chapter

### May 8th 5:30 PM

## Dinner with the Board and Annual Meeting

Various matters of interest to Engineers  
including Pending State Legislation to be discussed.

[Lehman's Tavern in Essington, PA](#)

Easy access off of I-95 @ Route 420

Free Parking

Please RSVP to Secretary Chris Fell

## 2024-25 Chapter Program

**State PSPE Awards Received by Our Chapter**

PSPE Chapter Special Projects Award for 2023-24

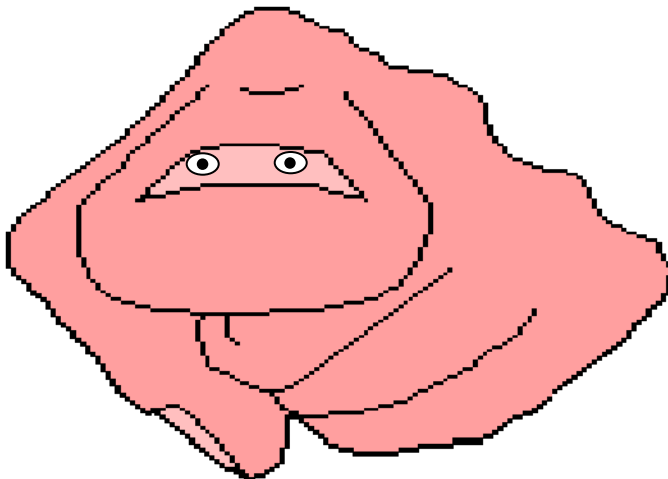
PSPE Chapter Outstanding Communications Award for 2022-23

PSPE Chapter Outstanding Program Award for 2021-22

We now begin to build our 2025-26 Program and look to Members for suggestions and to volunteer to share knowledge with your peers. Please contact our leadership at [President@PSPE-Philly.org](mailto:President@PSPE-Philly.org).

Pennsylvania Society of Professional Engineers  
Philadelphia Chapter  
2024-2025 Program

Date	Event - Click Event for Details
Sep.4, 2024	<a href="#">The Philadelphia Zoning Process</a>
Sep 18-20	<a href="#">PSPE State Conference Pittsburgh</a>
Oct. 10	<a href="#">8" Deep - Long Span Deck</a>
Nov. 7	<a href="#">OUR NEXT FOUR YEARS</a>
Dec. 5	<a href="#">Delaware Valley Region Outstanding Engineering Achievement Program</a>
SE Region	<a href="#">Board Meeting Open to All Members</a>
Jan. 9 2025	<a href="#">Ethics and Dispute Resolution Revisited</a>
Feb. 6	<a href="#">ECP DVEW Opening Ceremony</a>
Feb. 13 ECP	<a href="#">ECP Young Engineer Social</a>
Feb. 18 ECP	<a href="#">Delco Chapter Engineers Week Dinner</a>
Feb. 20 Delco	<a href="#">Phila Chapter MathCounts</a>
Feb. 22	<a href="#">Live at Temple</a>
MathCounts	<a href="#">Greater Philadelphia and Delaware Valley Regional</a>
Feb. 22	<a href="#">National Engineers' Week Banquet</a>
NSPE PA/NJ	<a href="#">Can an Engineer be sued by the Contractor?</a>
Engr's Week	Presented with the Montgomery Bar Assoc.
Mar. 6 12 noon	<a href="#">Another Tour of Convention Center</a>
LIVE & Zoom	<a href="#">Penn State: The Living Filter</a>
Mar. 6 6pm	<a href="#">Annual Meeting &amp; Officers Installed</a>
Apr. 3 12 noon	
May 1	



### Your PSPE is looking for a Few Good Engineers

to lead our Society for the 2025-26 chapter year and beyond. Open positions currently include State Secretary and SouthEast Regional Representative. While the **Officers** and **Directors** are charged with the fiduciary duties of leadership, the true leadership resides in the [Chairs of our Committees](#). Please visit <http://pspe-philly.org/committees/committees.html> for a full listing of our programs and their Champions.

## Save the Dates

# BootCamp 2025

**YOUR LICENSE RENEWAL IS 9/30/2025**

**BootCamp is THU FRI SAT**

**September 25-26-27 2025**

**LIVE at Temple U and Simulcast via Zoom**

**8 PDH \$100 16 PDH \$160 24 PDH \$200**

We are NOW seeking Lecturers and Presenters

Contact [BootCamp@pspe-philly.org](mailto:BootCamp@pspe-philly.org)

Outstanding Engineering Achievement Program  
Top regional projects judged by  
Presidents of regional chapters

## Winners for 2024

Honored Engineers' Week 2025

## Outstanding

[Langan: Swarthmore College Sharples Dining Hall](#)

[VIEW PRESENTATION HERE](#) - [VIEW Q&A HERE](#)

## Notable

[Pennoni: Calder Garden and Museum](#)

[VIEW PRESENTATION HERE](#) - [VIEW Q&A HERE](#)

## Honorable

[ProximaVision: ProximaVision Tethered Drone](#)

[VIEW PRESENTATION HERE](#) and [VIEW Q&A HERE](#)

## Presented

Two First Class Projects that were presented and  
are made available to your view here

[Urban: US1 Improvements Project](#)

[VIEW PRESENTATION HERE](#) - [VIEW Q&A HERE](#)

-- and --

[PSE: Perth Amboy High School](#)

[VIEW PRESENTATION HERE](#) - [VIEW Q&A HERE](#)

-----

Click Entry above to view Nomination  
then Click [VIEW PRESENTATION HERE](#)

then Click [VIEW Q&A HERE](#)

to experience the entire Program

[VIEW Judges' Comments](#)

## 2025 NATIONAL ENGINEERS' WEEK

**BANQUET** Hosted by the Philadelphia Chapter  
was held

Saturday - February 22, 2025 - 5:30 - 9PM

Returning to the DoubleTree Philadelphia Airport

4509 Island Avenue, Philadelphia 10153

STILL ONLY \$80

Recognize, Promote and Celebrate the Role  
Engineers fill in the Greater Philadelphia Area

60 Minute Reception before dinner is served

(with Hot Butlered Hors d'Oeuvres and Cash Bar)

then a Full Course Dinner and an after dinner Dessert Reception

- Program and Presentations -

Presentation of Outstanding Engineering Achievement Awards

and top Award to Langan, on Swarthmore's Sharples Hall

Presentation of MathCounts and STEM Awards



## Looking for a job?

visit <http://www.pspe-philly.org/jobs/jobs.html>



Champion Guide Advance | Unite

Your PSPE at work in Harrisburg  
See several highlights from the PA State Budget  
passed with PSPE support

[www.environmentalquest.com/newsletter/default.asp?NewsletterArticleID=60956&SubjectID=195](http://www.environmentalquest.com/newsletter/default.asp?NewsletterArticleID=60956&SubjectID=195)

# MathCounts 2025 Winners

## Top Teams in Philadelphia:

- 1st Germantown Friends School, Coach: R Matt Greenawalt
- 2nd J R Masterman School, Coach: Beca Lufi
- 3rd Girard Academic Music Program, Coach: Casey Thomas

## Top Individuals:

- 1. Zhao, Alexander J R Masterman School
- 2. Kaushik, Vihann J R Masterman School
- 3. Hayes, Lee Germantown Friends School
- 4. Nandy, Ayaan Germantown Friends School
- 5. Nandy, Eshaan Germantown Friends School
- 6. Diwakur, Vidur J R Masterman School
- 7. Wang, Jaden Germantown Friends School
- 8. Pao, George Germantown Friends School
- 9. Lu, Ryan Germantown Friends School
- 10. Xu, Matthew Germantown Friends School

## Pennsylvania State MathCounts Competition March 23rd

### 2025 TEAM RESULTS

- 1 Mount Nittany Middle School
- 2 Garnet Valley Middle School
- 3 Downingtown Middle School

### 2025 INDIVIDUAL RESULTS

- 1 Franklin H.
- 2 Benjamin L.
- 3 Ethan Q.
- 4 Andrew Z.

## National MathCounts Competition May 10-13, 2025

<https://www.mathcounts.org/programs/national-competition-schedule-glance>



## Get Your Continuing Education Credits NOW

PSPE Philadelphia is providing  
**ONLINE Credits**  
for only \$5/PDH

[Visit our Online PDH Delivery System Now](#)

[Click HERE](#)

NSPE provides 15 PDH FREE to Members  
click

<http://www.nspe.org/MemberBenefits/fifteenfreepdhs.html>

# Letter from the Editor

**Our 2024-25 Chapter Year has been both wildly successful and wanting.** Our program has been beyond expectations, but our turnout is still lower than pre-pandemic. We have returned to LIVE sit-down meetings, adding the benefit of pandemic lesson virtual skills to provide Simulcasting and Recording for future online Continuing Education.

We have returned to multiple LIVE TOURS albeit with fewer attendees. We have had a joint program with the Montgomery Bar Association highlighting how the LAW, different in PA than most other states, impacts our practice. We have invited our State PSPE lobbyist to share how our legislature may further impact our practice. We have covered Ethics in a “new” interactive Simulcast format with our Members.

But while we have added new Members to join PSPE, we are still struggling to increase their and your involvement. We NEED more of our Members to assist our many [Committees](#) and to fill the ranks of leadership. We have many past leaders who answer the call, but need new champions of programs and committees to rise to leadership. Leadership not only of our Society but also our Local, State and National Communities. YES, it is PSPE to whom our leaders turn when “bad things” happen and for guidance to **PROTECT THE PUBLIC HEALTH SAFETY PROPERTY AND ADVANCE OUR GENERAL WELFARE.** Do engage and meet with and advise our Governor, State Legislature and Community Councils.

- Should the need for a P.E. license be sunset and anyone be able to claim to be an Engineer?
- Should our State Statute of Repose be sunset and require you to store and safeguard your work forever?
- Should a person who passes a commercial teach to test certification exam be permitted to practice engineering?
- Should a commercial certification organization require a Professional Engineer to next pay for proprietary training and pass their home made test to practice?

All of these questions and more have called for YOUR PSPE representatives to chat together and advocate for the profession to our State leaders.

We have contributed to so much of these discussions in this past year, and are expecting to need share in our governance for the coming year.

Be a part of these debate.

# Officers for 2025-26

## See BYLAW 12 – NOMINATION AND ELECTION OF OFFICERS AND DIRECTORS

at <http://pspe-philly.org/bylaws/PhilaChapterBylawsVersion4-7-2005.pdf>

Current Slate provided by the Nominations Committee and published in the April Newsletter:

Fredric Plotnick, PE	President
-vacant-	President-Elect
-vacant-	Vice President
Robert Cargill, PE	Past President
Chris Fell, PE	Secretary
-vacant- keep posted -	Treasurer
Chris Fell, PE	Membership Secretary
Abraham El	State Director, 2027
Thomas Friese, PE	Alt State Director
Ed Pluciennik, PE	Chapter Director, 2026
Thomas Friese, PE	Chapter Director, 2026
Erik Hoet, PE	Chapter Director, 2027
-vacant-	Chapter Director, 2027
Justin Alexander, PE	Chapter Director, 2028
-vacant-	Chapter Director, 2028

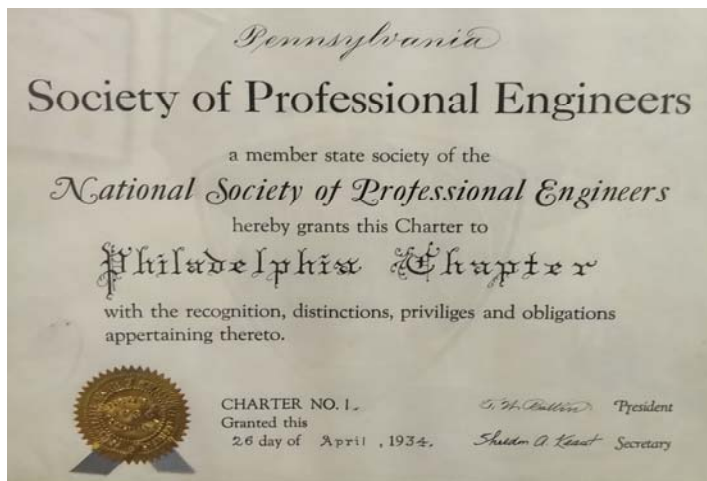
\* Directors are 3 year positions completing May year noted

SECTION 1. The nomination of officers and Directors shall be made by a **Nominating Committee**. This committee shall be appointed by the President early in the administrative year, and shall consist of at least five members of the Chapter, in good standing, one of whom shall be the living most recent Past President currently on the rolls of the Chapter, who shall serve as chair of the Committee.

Interested individuals may contact [president@pspe-philly.org](mailto:president@pspe-philly.org)

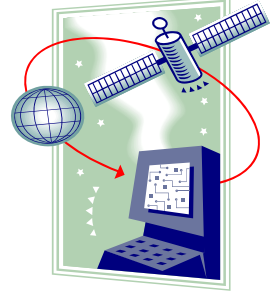
**The Philadelphia Chapter is looking for a Few Good Engineers** to lead our Chapter for the 2025-26 chapter year and beyond. While the **Officers and Directors** are charged with the fiduciary duties of leadership, the true leadership resides in the **Chairs of our Committees**. Please visit <http://pspe-philly.org/committees/committees.html> for a full listing of our programs and their Champions.

**Past-President Chris Fell** continues to seek Members who desire to join him in leading our Chapter. Contact at [president@pspe-philly.org](mailto:president@pspe-philly.org)



## News from State PSPE

Our State Legislature has Officially Approved Use of Electronic Seals



to

Read about it in PA Bulletin 22-1930

[www.pspe-philly.org/images/PABulletin22-1930.pdf](http://www.pspe-philly.org/images/PABulletin22-1930.pdf)

## Resources from NSPE

*free to Members of NSPE*

Click to access:

[How to apply for licensure](#)

[Continuing Education Requirements](#)

[Defining the Practice of Engineering](#)

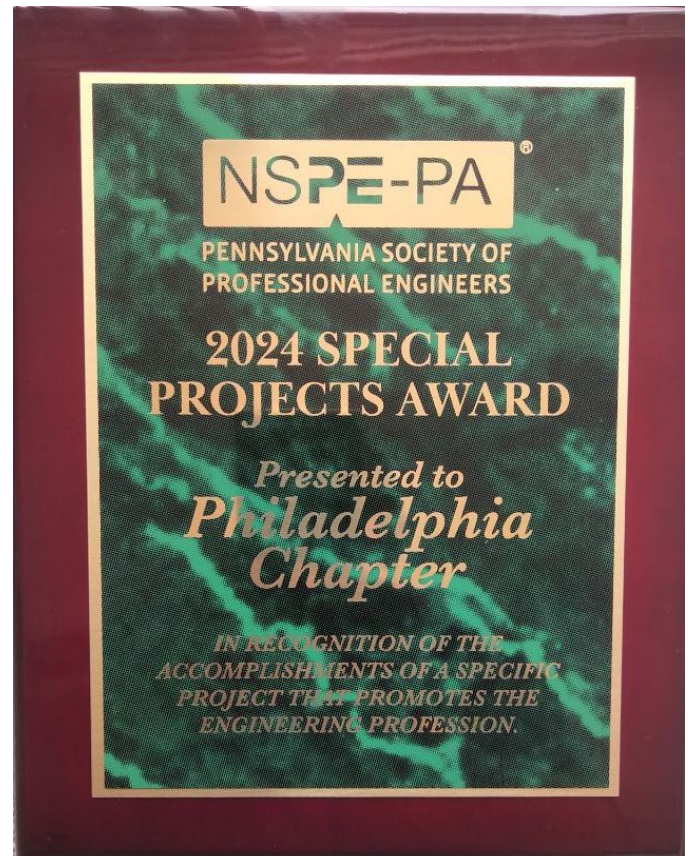
[Digital Signing and Sealing](#)

[Exemptions to Engineering Licensure](#)

[Violations and Enforcement of Laws](#)

[Disciplinary Self-Reporting Rules](#)

[More Resources](#)



for conducting BootCamp2023