



The Philadelphia Engineer

Founding Chapter 1934 – March 2020 issue

2019-20 Chapter Program

The Pennsylvania Society
of Professional Engineers
Philadelphia Chapter

Monthly Dinner Meeting and Courses
March 5, 2020

To be held at Pennoni Associates
1900 Market St - Suite 300
Philadelphia, PA 19103
attendees should enter at the 19th and Market entrance

Registration & Pizza & Wings: 5:30 PM to 6:00 PM

Course & Presentation: 6:00 PM to 8:00 PM

FRACKING (Hydraulic Fracturing)

Presented by Craig R. Calabria, Ph.D., P.E.

Visiting Professor & University of Salford Consulting Engineer
and

ASTM WALKWAY SURFACE SAFETY STANDARDS

Presented by David Fleisher, PE - Fleisher Forensics

Board Meeting open to all Members at 5pm immediately BEFORE Chapter Meeting

New reduced pricing to encourage Member participation
Cost is \$15 for Members of NSPE - \$20 for non-members

Click www.PSPE-Philly.org for Reservations

Outstanding Engineering Achievement Program

Top regional projects judged by
Presidents of regional chapters

Winners for 2019:

Professional Systems Engineering

Pennsylvania Capitol Police Integrated
Command Center

Notable: Maida Engineering

Sky Diving Wind Tunnel Power and Drive System

Honorable: Pennoni Associates

Edge Hill Road/Tvson Avenue Improvement Project

Click projects above for PDF of presentation



Philadelphia Chapter Program 2019-2020

Our program for 2019-20 is provided below. We continue to look
to our Members for suggestions and to volunteer to share
knowledge with your peers. Please contact our leadership at
President@PSPE-Philly.org.

Pennsylvania Society of Professional Engineers Philadelphia Chapter 2019-2020 Program

Date	Event - Click Event for Details
Sep. 5, 2019	The Rail Park
Sep 19-20, 2019	PSPE State Conference Bethlehem
Sep 26-27, 2019	PhillyChapter Education BootCamp
Oct. 3, 2019	Power Plants 101 Sky Diving Wind Tunnel
Nov. 7, 2019	Smart Cities Amusement Rides
Dec. 5, 2019 SE Regional	Delaware Valley Region Outstanding Engineering Achievement Program
Dec. 10, 2019 ECP Multi-Society	Annual Multi-Society Meeting DoubleTree 237 Broad & 5:30pm
Jan. 9, 2020	Electrical Safety in the Workplace Ethics, Fairness and your PE License
Jan. 23 2020	Tour Philadelphia Airport
Feb 1, 2020 MathCounts	Phila Chapter MathCounts at Temple University
Feb. 6, 2020	Legislative Round Table at Chart House Restaurant
Feb 13, 2020	Dinner Event by Engineers' Club
Feb 15, 2020 ECP YoungEng	Engineers Club Networking Event location tbd
Feb 22, 2020 NSPE PA/NJ Engineers' Week Banquet	Greater Philadelphia and Delaware Valley Regional National Engineers' Week Banquet at Chart House Restaurant
Mar 5, 2020	Fracking ASTM Walkway Safety Standards
Apr 2, 2020	Helical Piles and Geotech at Phila Navy Yard
May 7, 2020	Annual Meeting & Officers Installed
Aug 12-16, 2020	PSPE State Conference and NSPE Conference in Philadelphia

Join us for #PECON20 in

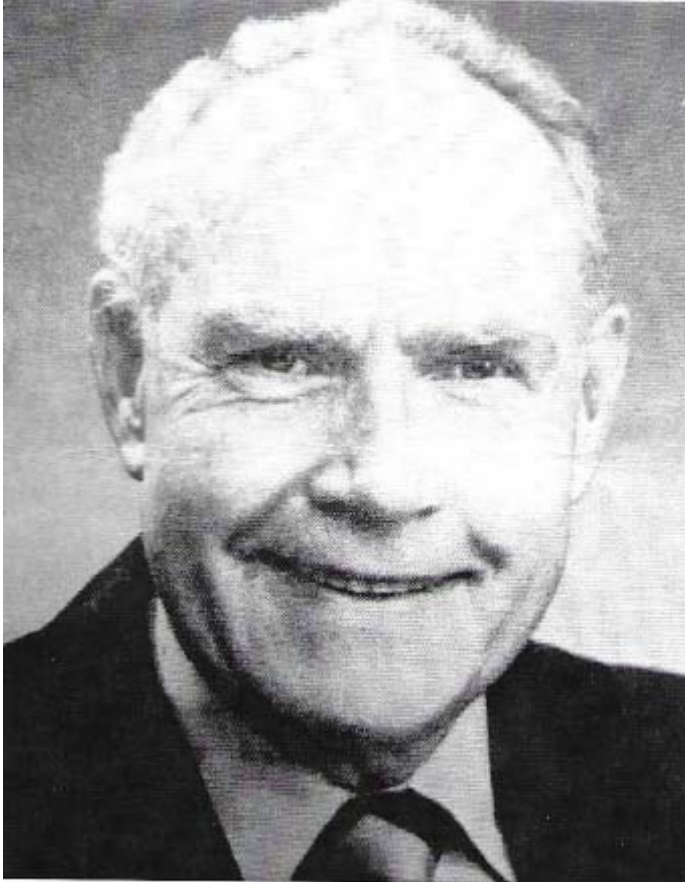


Philadelphia August 12–16, 2020

The Engineering Community
Celebrates the Life and
Mourns the Passing of
Richard A Mulford, PE
December 13 1930 – February 19 2020

The Engineering Community honors and will miss Dick.

Richard A. Mulford earned a Bachelors of Science in Mechanical Engineering from the University of Pennsylvania in 1952 and a Masters in 1957. Later in 1985, he graduated from the Tucks Executive Program of Dartmouth College. Dick worked for the Philadelphia Electric Company for over 38 years, becoming the lead engineer and project manager for the Limerick Power Project.



Throughout his engineering career, he earned many honors and awards, including the Engineers Club George Washington Metal, University of Pennsylvania D Robert Yarnall Award, and induction to our Pennsylvania Society of Professionals Engineers Dedicated Hall of Fame. And via his societies, Dick created many awards to honor and encourage the growth of others. He was a mentor.

We of the community of engineers will remember Dick mostly for his efforts and work for the Engineers Club of Philadelphia, the Pennsylvania Society of Professional Engineers, and many other professional, technical, educational, community and charitable causes. Memorial donations may be made to the Church Farm School, 1001 E. Lincoln Highway, Exton PA 19341.



Call for Nominations

The Philadelphia Chapter is looking for a Few Good Engineers to lead our Chapter for the 2020-21 chapter year and beyond. President-Elect Chris Fell will rise to be our President; we seek Members who may desire to join him in leading our Chapter.

MATHCOUNTS

MathCounts was Saturday, February 1st
MATHCOUNTS is a program sponsored by the National Society of Professional Engineers (NSPE) and its state and local Chapters, promoting excellence in mathematics. Each year, there are competitions to engage 6th, 7th, and 8th graders and recognize the best schools and students on a local, state, and national level.

2020 Winners

Top Teams:

First Place: Julia Reynolds Masterman

- Coach: Chris Taranta

Second Place: Germantown Friends School

- Coach: Catherine Jones

Third Place: Springside Chestnut Hill Academy Boys

- Coach: Andrew Wolf

Top Individuals:

1st: Sivan Frankel, Julia Reynolds Masterman

2nd: Michael Huang, Julia Reynolds Masterman

3rd: Chris Ji, Julia Reynolds Masterman

4th: Alvin Pan, Julia Reynolds Masterman

5th: Tomas Falleti-Moore, Julia Reynolds Masterman

6th: Yehuda Mahlab, Julia Reynolds Masterman

7th: Cathy Liu, Germantown Friends School

8th: August Russell, Julia Reynolds Masterman

9th: Arjun Goswani, Springside Chestnut Hill Academy

10th: Sasha Manovski, Germantown Friends School

**Thank you to our Chapter MathCounts Team
Alex Sopin - Pedro Pinto - Abraham EI
and all volunteers and coaches**

To volunteer or for more information contact Abraham EI

O: 215-254-7778 | M: 215-796-5261 | AEI@Pennoni.com

To Donate to Mathcounts:



Join PSPE Philadelphia for #PECON20 in



Philadelphia August 12–16, 2020