



The Philadelphia Engineer

Founding Chapter 1934 – February 2023 issue

2022-23 Chapter Program

The Pennsylvania Society
of Professional Engineers
Philadelphia Chapter

Monthly Dinner Meetings, Tours and Courses

February 9th, 2023 6-8pm

Legislation Impacting Engineers
A Round Table Discussion

Returning to the origins of our Society, this virtual round table provides Members an opportunity to shape our Society input to our State Legislators. Led by John Wanner, our Society lobbyist, we will discuss one or more of the bills now pending. The meeting will be held virtually.

Open only to Members of PSPE via Zoom Invite to be sent on 2/8
This Event has been accredited for 2.0 Professional Development Hours by the Pennsylvania Society of Professional Engineers. PSPE believes that this course will be accepted for credit in PA, NJ and other National Model states where courses do not require pre-approval

2023 NATIONAL ENGINEERS' WEEK

BANQUET Hosted by the Philadelphia Chapter

Saturday - February 25, 2023 - 5-10PM

Chart House Restaurant

555 S Christopher Columbus Blvd Philadelphia, PA 19147

((215) 625-8383 - Free Parking

\$80 (\$90 after 2/10)

Reservations at www.pspe-philly.org

Recognize, Promote and Celebrate the Role
Engineers fill in the Greater Philadelphia Area

90 Minute Reception before dinner is served

(with Hot Butlered Hors d'Oeuvres and Cash Bar)

then a Full Course Dinner and an after dinner Dessert Reception

- [Program and Presentations](#) -

Presentation of Outstanding Engineering Achievement Awards

Presentation of MathCounts and STEM Awards



Outstanding Engineering Achievement Award 2022
Presented to Larry Dibor by Senator Anthony Williams

2022-23 Chapter Program

Our Philadelphia Chapter program for 2021-22 was awarded
PSPE Chapter Outstanding Program Award

presented at the State PSPE Annual Meeting September 23rd

Our program for 2022-23 is continues to evolve. We continue to look to our Members for suggestions and to volunteer to share knowledge with your peers. Please contact our leadership at

President@PSPE-Philly.org.

Pennsylvania Society of Professional Engineers
Philadelphia Chapter
2022-2023 Program

Date	Event - Click Event for Details
Sep.8, 2022	Tour of New WAWA Septa Station
Sep 13&15 State	PSPE State Conference Virtual
Sep. 23 State	PSPE State Annual Conference Live
Oct. 6, 2022	Electric Power Systems and Vehicles
November 2022	ETHICS for Engineers
Dec. 1, 2022	Delaware Valley Region Outstanding Engineering Achievement Program
Jan. 5, 2023	Elevators. Complex Machines
Feb. 9, 2023	Legislation Impacting Engineers
Feb 4, 2023 MathCounts	Phila Chapter MathCounts Live at Temple
Feb 25, 2023 NSPE PA/NJ Engr's Week	Greater Philadelphia and Delaware Valley Regional National Engineers' Week Banquet
Mar 2, 2023	Live/Virtual TBD
Apr 6, 2023	Live/Virtual TBD
May 4, 2023	Annual Meeting & Officers Installed

MATHCOUNTS

MathCounts for 2022 was virtual

But is again LIVE for 2023

for more information click [HERE](#) or

<https://www.mathcounts.org/sites/default/files/Critical%20Dates%20for%20Website%20KC.pdf>

MATHCOUNTS is a program sponsored by the National Society of Professional Engineers (NSPE) and its state and local Chapters, promoting excellence in mathematics. Each year, there are competitions to engage 6th, 7th, and 8th graders and recognize the best schools and students on a local, state, and national level.

Important Dates: Philly Chapter FEB 4th 8am at Temple U

Other SERegion Chapters TBD

State Competition MAR 17-18th in Harrisburg

For those not local to Philadelphia but interested in helping at a MATHCOUNTS competition near you, please consider volunteering in your county with this great program.

To volunteer or for more information contact Abraham EI

O: 215-254-7778 | M: 215-796-5261 | AEI@Pennoni.com

Outstanding Engineering Achievement Program

Top regional projects judged by Presidents of regional chapters

Winners for 2022:

Outstanding

[Langan: Laborer's District Council Education Center](#)
[VIEW PRESENTATION HERE](#) - [VIEW Q&A HERE](#)

Notable

[Pennoni: Pennswood Road Bridge over Amtrack](#)
[VIEW PRESENTATION HERE](#) - [VIEW Q&A HERE](#)

Honorable

[STV: SEPTA Wayne Junction Static Frequency Rehab](#)
[VIEW PRESENTATION HERE](#) - [VIEW Q&A HERE](#)

[PSE: Passaic School District Dayton Childhood Center](#)
[VIEW PRESENTATION HERE](#) - [VIEW Q&A HERE](#)

[SEPTA: Elwyn to Wawa Station Restoration](#)
[VIEW PRESENTATION HERE](#) - [VIEW Q&A HERE](#)

Click Entry above to view Nomination
then Click [VIEW PRESENTATION HERE](#)
then Click [VIEW Q&A HERE](#)

to experience the entire Program

[Click for Final Comments by Officers of PSPE and NJSPE](#)
[VIEW Judges' Comments](#)

NOMINATIONS for 2023-24

NOMINATIONS for 2023-24 are now OPEN
See **BYLAW 12 – NOMINATION AND ELECTION OF OFFICERS AND DIRECTORS**
at <http://pspe-philly.org/bylaws/PhilaChapterBylawsVersion4-7-2005.pdf>

Current Slate provided by the Nominations Committee are provided below:

Robert Cargill, PE	President
-vacant-	President-Elect
Brandon Swartley, PE	Vice President
Thomas Friese, PE	Past President
Linda Douthwaite, PE	Secretary
Linda Douthwaite, PE	Treasurer
Chris Fell, PE	Membership Secretary
Abraham El	State Director, 2024
Thomas Friese, PE	Alt State Director
Erik Hoet, PE	Chapter Director, 2024
Fredric L. Plotnick, PE	Chapter Director, 2024
Yefim Gudesblat, PE	Chapter Director, 2025
Justin Alexander, PE	Chapter Director, 2025
Ed Pluciennik, PE	Chapter Director, 2026
Thomas Friese, PE	Chapter Director, 2026

* Directors are 3 year positions completing May year noted

SECTION 1. The nomination of officers and Directors shall be made by a **Nominating Committee**. This committee shall be appointed by the President early in the administrative year, and shall consist of at least five members of the Chapter, in good standing, one of whom shall be the living most recent Past President currently on the rolls of the Chapter, who shall serve as chair of the Committee.

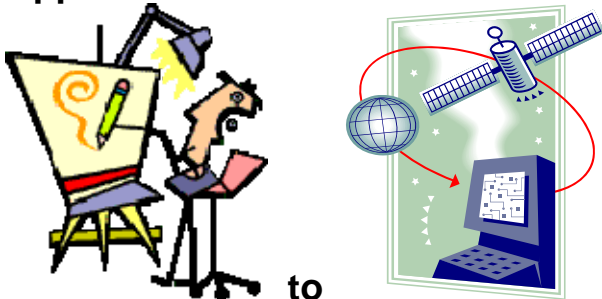
Interested individuals may contact president@pspe-philly.org

The Philadelphia Chapter is looking for a Few Good Engineers to lead our Chapter for the 2022-23 chapter year and beyond. While the **Officers and Directors** are charged with the fiduciary duties of leadership, the true leadership resides in the **Chairs of our Committees**. Please visit <http://pspe-philly.org/committees/committees.html> for a full listing of our programs and their Champions.

Past-President Chris Fell continues to seek Members who desire to join him in leading our Chapter. Contact at president@pspe-philly.org

News from State PSPE

Our State Legislature has Officially Approved Use of Electronic Seals



Read about it in PA Bulletin 22-1930
www.pspe-philly.org/images/PABulletin22-1930.pdf

Resources from NSPE

free to Members of NSPE

Click to access:

- [How to apply for licensure](#)
- [Continuing Education Requirements](#)
- [Defining the Practice of Engineering](#)
- [Digital Signing and Sealing](#)
- [Exemptions to Engineering Licensure](#)
- [Violations and Enforcement of Laws](#)
- [Disciplinary Self-Reporting Rules](#)
- [More Resources](#)

