

The Philadelphia Engineer

Founding Chapter 1934 – April 2025 issue

2024-25 Chapter Program

The Pennsylvania Society
of Professional Engineers
Philadelphia Chapter

April 3rd at Noon

Penn State's Living Filter Live at Pennoni Associates

1900 Market Street, Suite 300, Philadelphia, PA

Simulcast via TEAMS

for PDH Certificate visit <http://pspe-philly.org/>

MathCounts 2025 Winners

Top Teams in Philadelphia:

- 1st Germantown Friends School, Coach: R Matt Greenawalt
- 2nd J R Masterman School, Coach: Beca Lufi
- 3rd Girard Academic Music Program, Coach: Casey Thomas

Top Individuals:

- 1. Zhao, Alexander J R Masterman School
- 2. Kaushik, Vihann J R Masterman School
- 3. Hayes, Lee Germantown Friends School
- 4. Nandy, Ayaan Germantown Friends School
- 5. Nandy, Eshaan Germantown Friends School
- 6. Diwakur, Vidur J R Masterman School
- 7. Wang, Jaden Germantown Friends School
- 8. Pao, George Germantown Friends School
- 9. Lu, Ryan Germantown Friends School
- 10. Xu, Matthew Germantown Friends School

Pennsylvania State MathCounts Competition March 23rd

2025 INDIVIDUAL RESULTS

PLACE CHAPTER STUDENT SCHOOL

to be posted soon at <http://pspe-philly.org/>

2025 TEAM RESULTS

SCHOOLPLACE CHAPTER COACH

to be posted soon at <http://pspe-philly.org/>



2024-25 Chapter Program

State PSPE Awards Received by Our Chapter

PSPE Chapter Special Projects Award for 2023-24

PSPE Chapter Outstanding Communications Award for 2022-23

PSPE Chapter Outstanding Program Award for 2021-22

We continue building our 2024-25 Program and look to Members for suggestions and to volunteer to share knowledge with your peers. Please contact our leadership at President@PSPE-Philly.org.

Pennsylvania Society of Professional Engineers
Philadelphia Chapter
2024-2025 Program

Date	Event - Click Event for Details
Sep.4, 2024	The Philadelphia Zoning Process
Sep 18-20	PSPE State Conference Pittsburgh
Oct. 10	8" Deep - Long Span Deck
Nov. 7	OUR NEXT FOUR YEARS
Dec. 5	Delaware Valley Region Outstanding Engineering Achievement Program
SE Region	Board Meeting Open to All Members
Jan. 9 2025	Ethics and Dispute Resolution Revisited
Feb. 6	ECP DVEW Opening Ceremony
Feb. 13 ECP	ECP Young Engineer Social
Feb. 18 ECP	Delco Chapter Engineers Week Dinner
Feb. 20 Delco	Phila Chapter MathCounts
Feb. 22	Live at Temple
MathCounts	Greater Philadelphia and Delaware Valley Regional
Feb. 22	National Engineers' Week Banquet
NSPE PA/NJ	Can an Engineer be sued by the Contractor?
Engr's Week	Presented with the Montgomery Bar Assoc.
Mar. 6 12 noon	Another Tour of Convention Center
LIVE & Zoom	Penn State: The Living Filter
Mar. 6 6pm	Annual Meeting & Officers Installed
Apr. 3 12 noon	
May 1	

Save the Dates

BootCamp 2025

YOUR LICENSE RENEWAL IS 9/30/2025

BootCamp is THU FRI SAT

September 25-26-27 2025

LIVE at Temple U and Simulcast via Zoom

8 PDH \$100 16 PDH \$160 24 PDH \$200

We are NOW seeking Lecturers and Presenters

Contact BootCamp@pspe-philly.org

NSPE-PA PENNSYLVANIA SOCIETY OF
PROFESSIONAL ENGINEERS

Outstanding Engineering Achievement Program
Top regional projects judged by
Presidents of regional chapters

Winners for 2024

Honored Engineers' Week 2025

Outstanding

[Langan: Swarthmore College Sharples Dining Hall](#)

[VIEW PRESENTATION HERE](#) - [VIEW Q&A HERE](#)

Notable

[Pennoni: Calder Garden and Museum](#)

[VIEW PRESENTATION HERE](#) - [VIEW Q&A HERE](#)

Honorable

[ProximaVision: ProximaVision Tethered Drone](#)

[VIEW PRESENTATION HERE](#) and [VIEW Q&A HERE](#)

Presented

Two First Class Projects that were presented and
are made available to your view here

[Urban: US1 Improvements Project](#)

[VIEW PRESENTATION HERE](#) - [VIEW Q&A HERE](#)

-- and --

[PSE: Perth Amboy High School](#)

[VIEW PRESENTATION HERE](#) - [VIEW Q&A HERE](#)

Click Entry above to view Nomination
then Click [VIEW PRESENTATION HERE](#)

then Click [VIEW Q&A HERE](#)

to experience the entire Program

[VIEW Judges' Comments](#)

2025 NATIONAL ENGINEERS' WEEK

BANQUET Hosted by the Philadelphia Chapter
was held

Saturday - February 22, 2025 - 5:30 - 9PM

Returning to the DoubleTree Philadelphia Airport

4509 Island Avenue, Philadelphia 10153

STILL ONLY \$80

Recognize, Promote and Celebrate the Role
Engineers fill in the Greater Philadelphia Area

60 Minute Reception before dinner is served

(with Hot Butlered Hors d'Oeuvres and Cash Bar)

then a Full Course Dinner and an after dinner Dessert Reception

- Program and Presentations -

Presentation of Outstanding Engineering Achievement Awards

and top Award to Langan, on Swarthmore's Sharples Hall

Presentation of MathCounts and STEM Awards



Looking for a job?

visit <http://www.pspe-philly.org/jobs/jobs.html>



Champion Guide Advance | Unite

Your PSPE at work in Harrisburg
See several highlights from the PA State Budget
passed with PSPE support

www.environmentalquest.com/newsletter/default.asp?Newsletter/ArticleID=60956&SubjectID=195

NOMINATIONS for 2025-26

See BYLAW 12 – NOMINATION AND ELECTION OF OFFICERS AND DIRECTORS

at <http://pspe-philly.org/bylaws/PhilaChapterBylawsVersion4-7-2005.pdf>

Current Slate provided by the Nominations Committee and published in the April Newsletter:

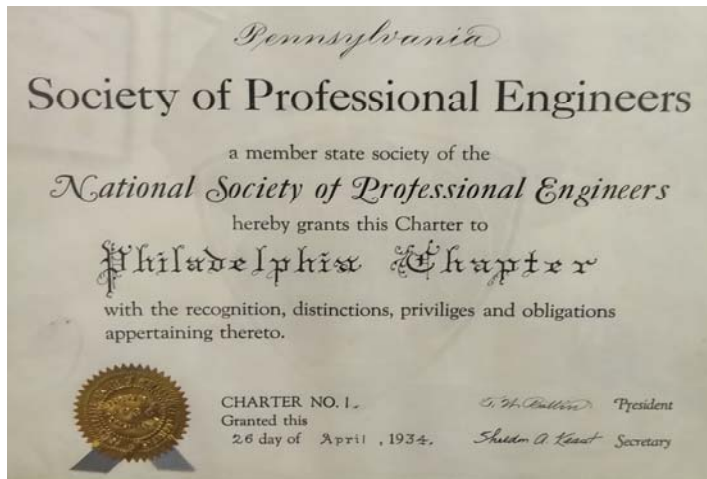
Fredric Plotnick, PE	President
-vacant-	President-Elect
-vacant-	Vice President
Robert Cargill, PE	Past President
Chris Fell, PE	Secretary
-vacant- keep posted -	Treasurer
Chris Fell, PE	Membership Secretary
Abraham El	State Director, 2027
Thomas Friese, PE	Alt State Director
Ed Pluciennik, PE	Chapter Director, 2026
Thomas Friese, PE	Chapter Director, 2026
Erik Hoet, PE	Chapter Director, 2027
-vacant-	Chapter Director, 2027
Yefim Gudesblat, PE	Chapter Director, 2028
Justin Alexander, PE	Chapter Director, 2028

* Directors are 3 year positions completing May year noted

SECTION 1. The nomination of officers and Directors shall be made by a **Nominating Committee**. This committee shall be appointed by the President early in the administrative year, and shall consist of at least five members of the Chapter, in good standing, one of whom shall be the living most recent Past President currently on the rolls of the Chapter, who shall serve as chair of the Committee.

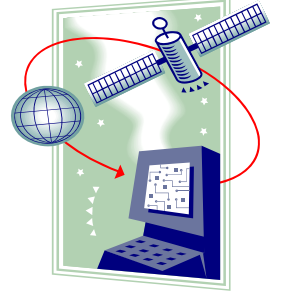
Interested individuals may contact president@pspe-philly.org

The Philadelphia Chapter is looking for a Few Good Engineers to lead our Chapter for the 2025-26 chapter year and beyond. While the **Officers and Directors** are charged with the fiduciary duties of leadership, the true leadership resides in the **Chairs of our Committees**. Please visit <http://pspe-philly.org/committees/committees.html> for a full listing of our programs and their Champions. **Past-President Chris Fell** continues to seek Members who desire to join him in leading our Chapter. Contact at president@pspe-philly.org



News from State PSPE

Our State Legislature has Officially Approved Use of Electronic Seals



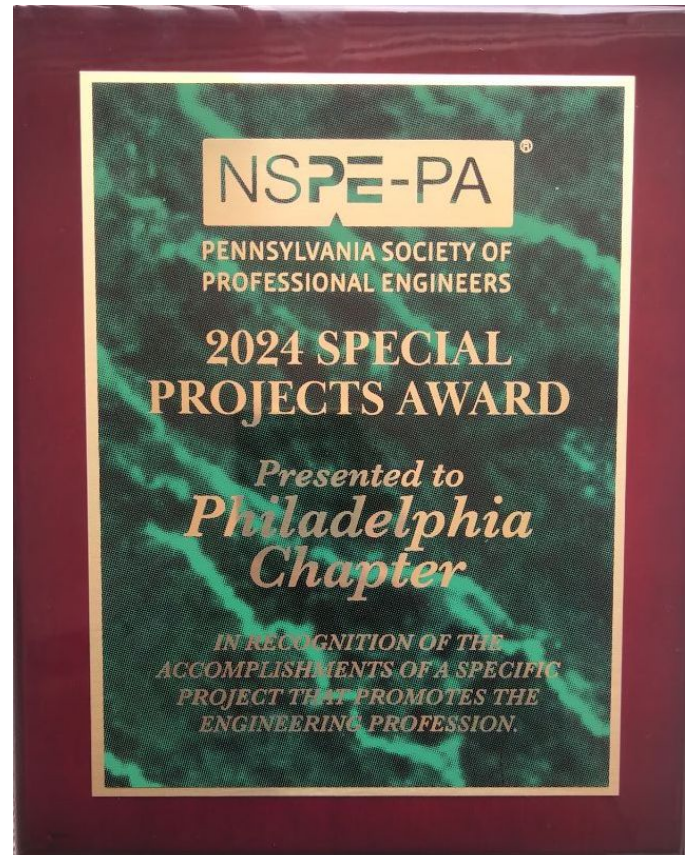
to
Read about it in PA Bulletin 22-1930
www.pspe-philly.org/images/PABulletin22-1930.pdf

Resources from NSPE

free to Members of NSPE

Click to access:

- [How to apply for licensure](#)
- [Continuing Education Requirements](#)
- [Defining the Practice of Engineering](#)
- [Digital Signing and Sealing](#)
- [Exemptions to Engineering Licensure](#)
- [Violations and Enforcement of Laws](#)
- [Disciplinary Self-Reporting Rules](#)
- [More Resources](#)



for conducting BootCamp2023